

# Creotech

## INDUSTRIES



## PUMP PACKAGE SOLUTIONS

EXPERIENCE IN  
APPLYING, DESIGNING & BUILDING  
PUMP PACKAGES

## SCOPE OF SUPPLY - BASIC

Pump packages can be very basic, focusing on limited variables to the point of becoming commodity items.



Plate & Frame HX 1000 TR,  
12 basket strainer c/w ΔP switch



Stainless pump for non-ferrous application,  
c/w free cooling feature



Pump 5x60 HP 3500rpm TEFC  
Reservoir 14ft x 6 ft x 8 ft H

## Pump Configuration

All pumps come complete with isolation valves, check valve, pressure gauge and pressure switch for flow confirmation. Soft start of VFD control also available.



Pump 3x50 HP 1750rpm  
4200 GPM, closed system

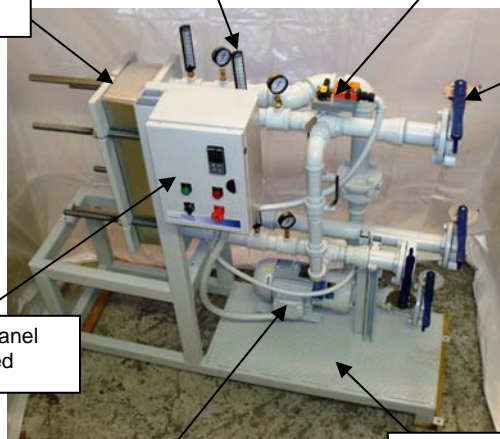


## Features & Functionality

Systems can be very basic or built up with a variety of components to give very good control and functionality.



Control and power panel  
Fully wired and tested



Pump selected and  
mounted with headers

Sturdy frame for ease of  
installation and compact  
foot print

Plate and frame heat  
exchanger for segregated  
systems

Pressure & Temperature  
Indicators

3-Way Control valve

Isolation valves and  
manifold to simplify  
field piping and  
installation

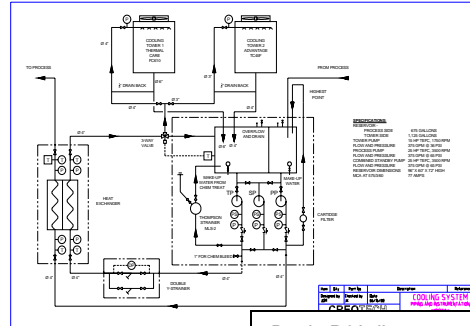
# FULLY INTEGRATED

## Evaluate & Design Your Process Application

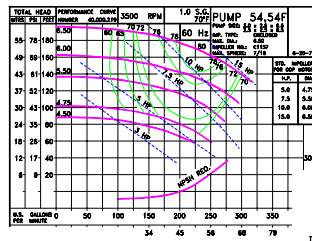
Creotech can take an application from a very basic point of a customers requirement. Reviewing the needs and the goals of the user.

Designing the system and selecting the components are next. They could have a number of goals:

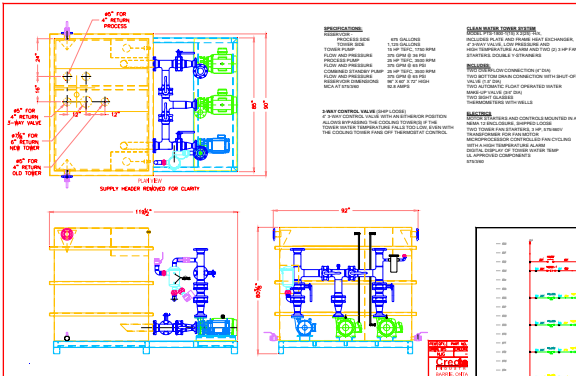
- Initial low capital investment
- Energy savings
- Redundancy/Reliability
- System control/hysteresis



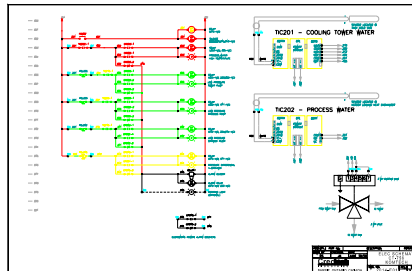
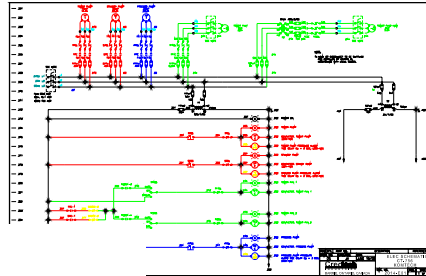
Basic P&I diagrams produce to describe the proposed system



Pump Selection to best suit the requirement of the system



## ELECTRICAL AND MECHANICAL



## Engineering and Manufacturing

Creotech can design and build both the mechanical and electrical portions of the units, in-house.

Creotech's lean infrastructure with high end support allows for quick turn around and competitive pricing.



# PARAMETRIC PUMP

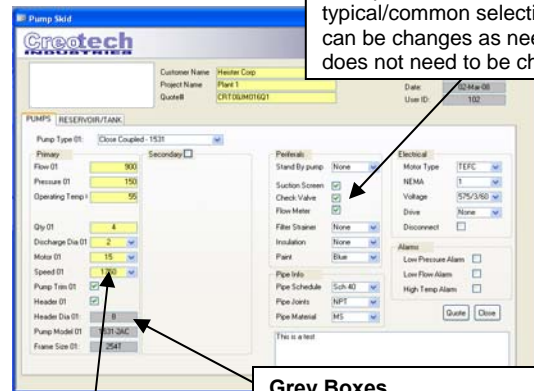


- **COST EFFECTIVE**
- **INSTANTANEOUS QUOTES**
- **INCREASE YOUR PRODUCTIVITY**
- **GIVE YOUR CUSTOMER WHAT THEY NEED**
- **REFINE YOUR CONFIGURATION**
- **MAKE AS MANY VARIATIONS AS YOU WANT**

## Selection Screen

The user will see a selection screen which gives all the options for the pump skid. There are only a few required inputs to give a basic skid configuration. Pull down menus gives the options available

The user can make the configuration of the pump skid specific to their application. The quote and description is based on these choices.



### White Boxes

Are optional; Defaults show typical/common selections but can be changes as needed, but does not need to be changed.

### Yellow Boxes

Are the minimum that needs to be filled in.

### Grey Boxes

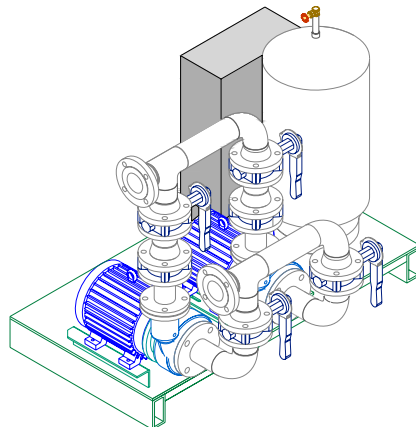
Are outputs for info only. Can't be changed. Changes are made by changing values in yellow boxes.

## CREOTECH - PSA

### BASIC PUMP PACKAGE

From 10-250 GPM

2 - 15 HP



### SPECIFICATIONS:

PUMP CIRCULATION PACKAGE

COMMON BASE, WITH 2 CLOSE COUPLED CENTRIFUGAL PUMPS, CAST IRON CONSTRUCTION C/W TYPE 21 MECHANICAL SEAL

### COMPLETE WITH

- COMMON FRAME
- MOUNTED AND WIRED CONTROL CABINET
- CONTACTORS AND OVER LOAD
- DISCONNECT
- CONTROLS TRANSFORMER
- SECONDARY FUSE
- HAND-OFF-AUTO SELECTOR SWITCH
- POWER AND FAULT INDICATOR LIGHTS
- ALARM LIGHT WITH HORN
- ALARM RESET BUTTON
- LOW PRESSURE SWITCH (1 PER PUMP)
- AUTO LEAD LAG SWITCH
- MANUAL LEAD LAG SWITCH
- AUTOMATIC TRANSFER TO NON OPERATING PUMP IN CASE OF FAULT
- REMOTE ON/OFF CONTACT
- REMOTE ALARM CONTACT